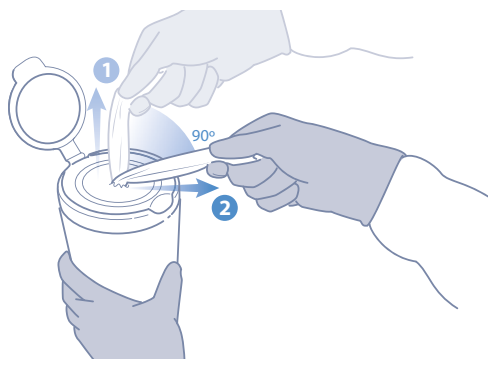


CaviWipes™ HP

Surface Disinfection



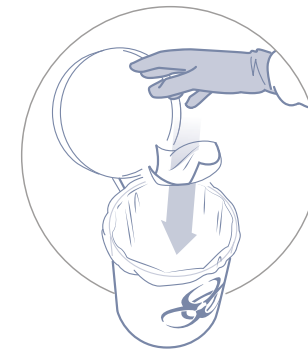
1

Pull out CaviWipes HP towelette, tearing at a 90° angle.



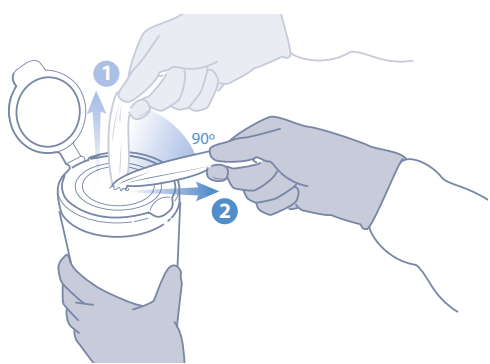
2

IF NO DEBRIS PRESENT, skip to step 5.
IF VISIBLE DEBRIS PRESENT clean the surface thoroughly and then follow steps 3-6.



3

Once surface is clean, dispose of used towelette in accordance with Federal, State, and local regulations for infectious materials disposal.



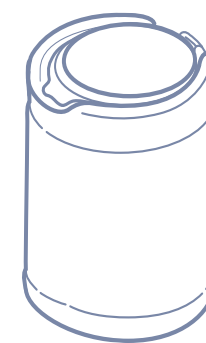
4

Pull out additional CaviWipes HP towelette, tearing off at a 90° angle.



5

Disinfect cleaned surface with towelette. Leave surface wet for 1 minute. Dispose of used towelette.



6

Ensure canister lid remains closed after use to prevent towelettes from drying out.

Best Practices to Remove Surface Residues

- **Choose appropriate products.** Select for contact time, kill claims, aesthetics, and medical device manufacturers instructions for use.
- **Examine equipment surfaces.** Check for cracking, staining, discoloration, or any other early signs of residue issues.
- **Follow wipe down procedures.** Disinfectant manufacturers, Infection Preventionists, and equipment manufacturers recommend cleaning equipment surfaces after reaching the required contact time with a damp cloth or paper towel daily or weekly to remove disinfectant residues and help prevent potential staining, drying and cracking of equipment. Procedure frequency can be optimized based on your facility conditions.

Refer to Product Label for Special Precleaning Instructions and Full Use Instructions.

Ordering Information

Part #	Description	Packaging
16-1100	CaviWipes HP (6" x 6.75")	12 canisters/case 160 towelettes per canister
16-1150	CaviWipes HP XL (9" x 12")	12 canisters/case 65 towelettes per canister



To Learn More Scan the QR code
or Visit metrex.com

